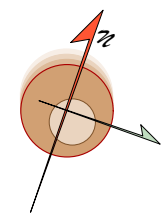
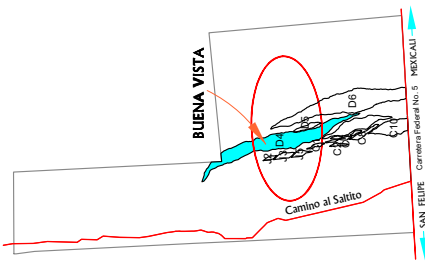
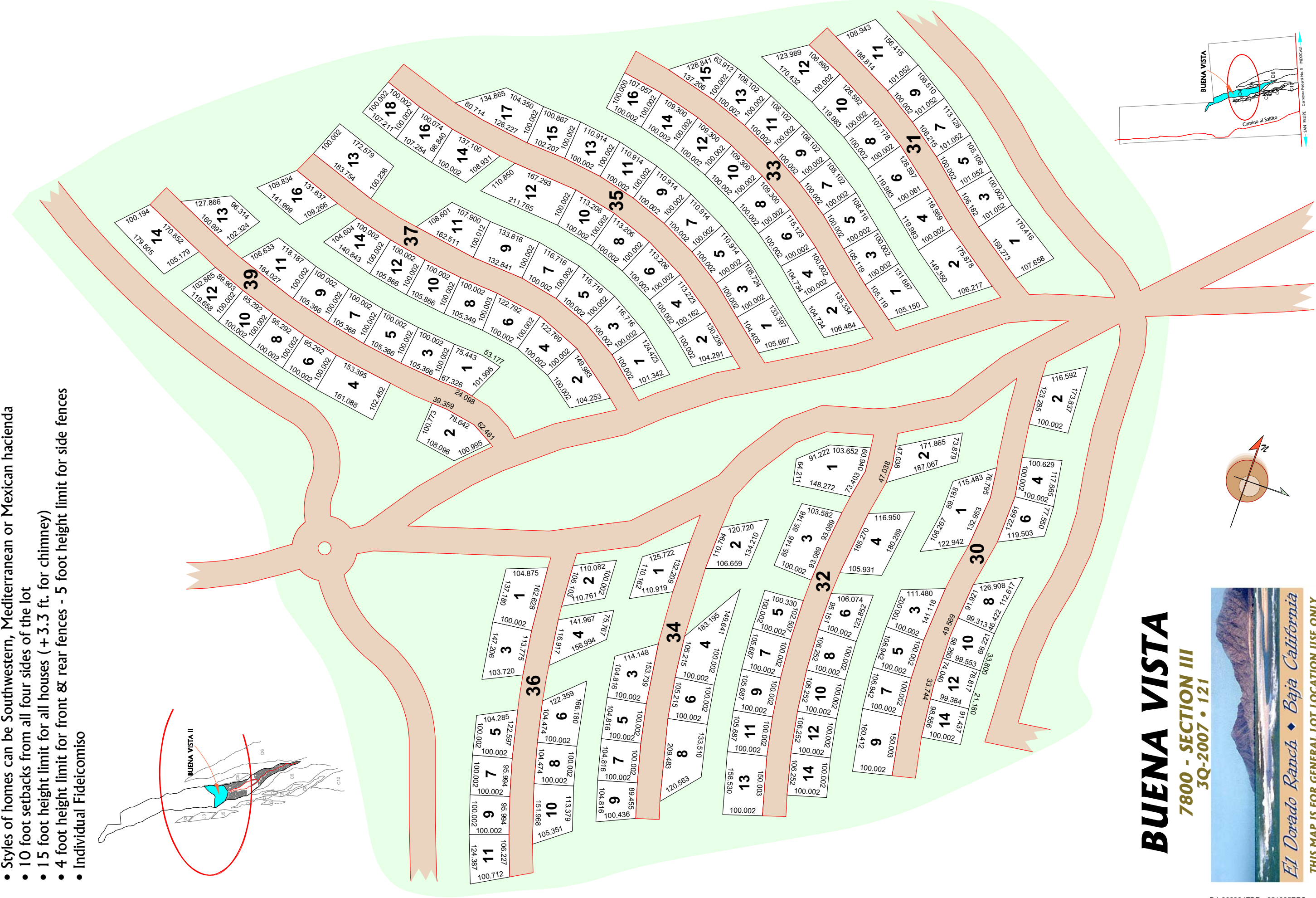
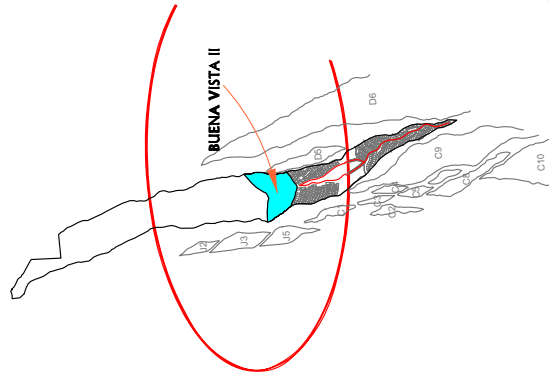


BUENA VISTA

- Homes only community with underground electric
- Large lots on cul-de-sacs adjacent to large open spaces
- 1500 sq. ft. minimum house size; 1200 sq. ft. minimum interior + 300 sq. ft. minimum exterior
- Styles of homes can be Southwestern, Mediterranean or Mexican hacienda
- 10 foot setbacks from all four sides of the lot
- 15 foot height limit for all houses (+ 3.3 ft. for chimney)
- 4 foot height limit for front & rear fences - 5 foot height limit for side fences
- Individual Fideicomiso



BUENA VISTA

**7800 - SECTION III
3Q-2007 • 121**



El Dorado Ranch • Baja California

THIS MAP IS FOR GENERAL LOT LOCATION USE ONLY
ARCHITECT - JORGE PONCE • ARTWORK • BOB SKYE
COPY BY WRITTEN PERMISSION ONLY